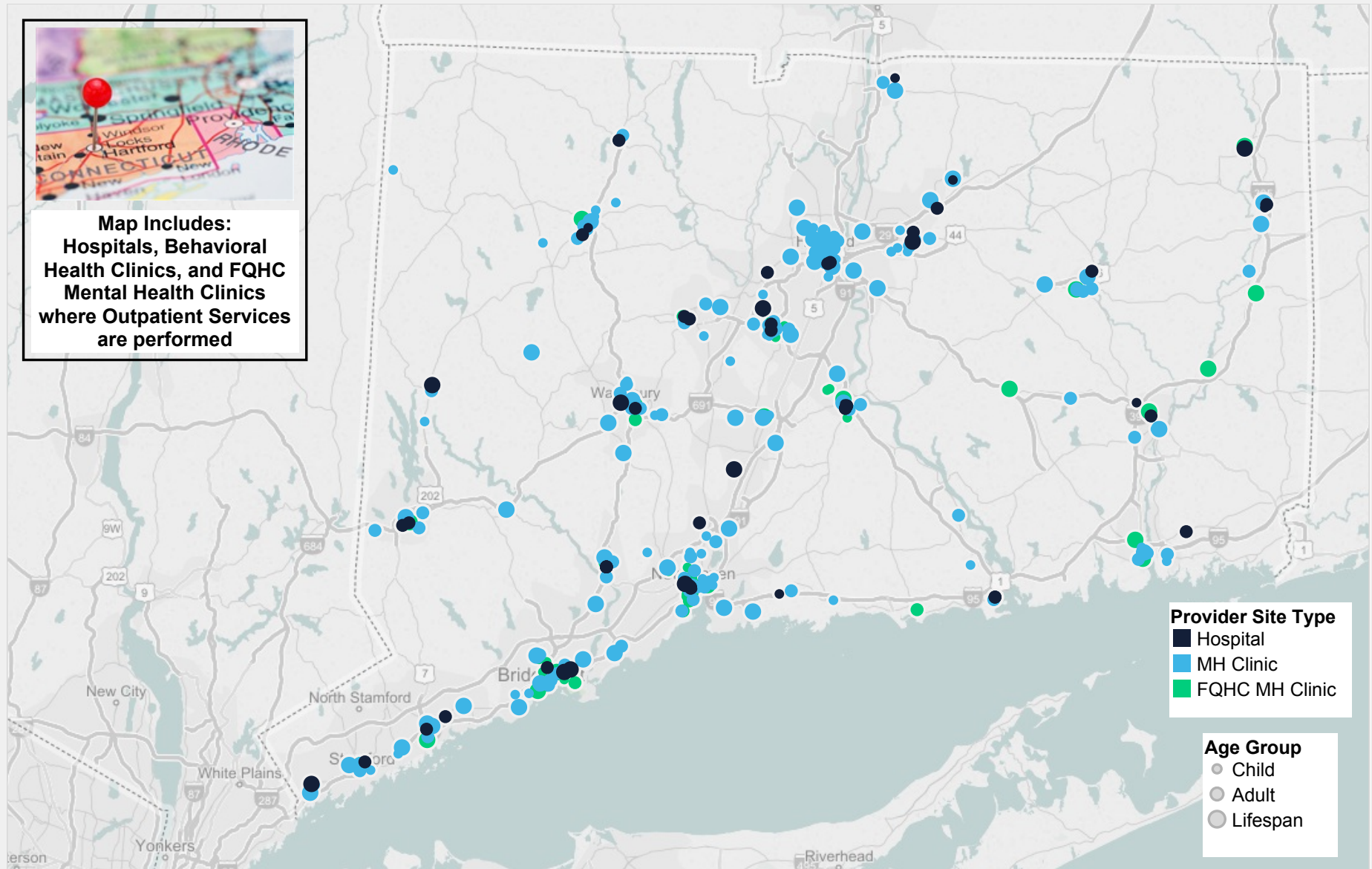


Connecticut Outpatient Medicaid Provider Locations



Map Includes:
Hospitals, Behavioral Health Clinics, and FQHC Mental Health Clinics where Outpatient Services are performed



Provider Site Type
 ■ Hospital
 ■ MH Clinic
 ■ FQHC MH Clinic

Age Group
 ● Child
 ● Adult
 ● Lifespan

Provider Site Type
All

Provider Type
All



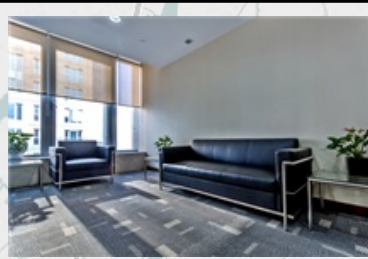
beacon
health options



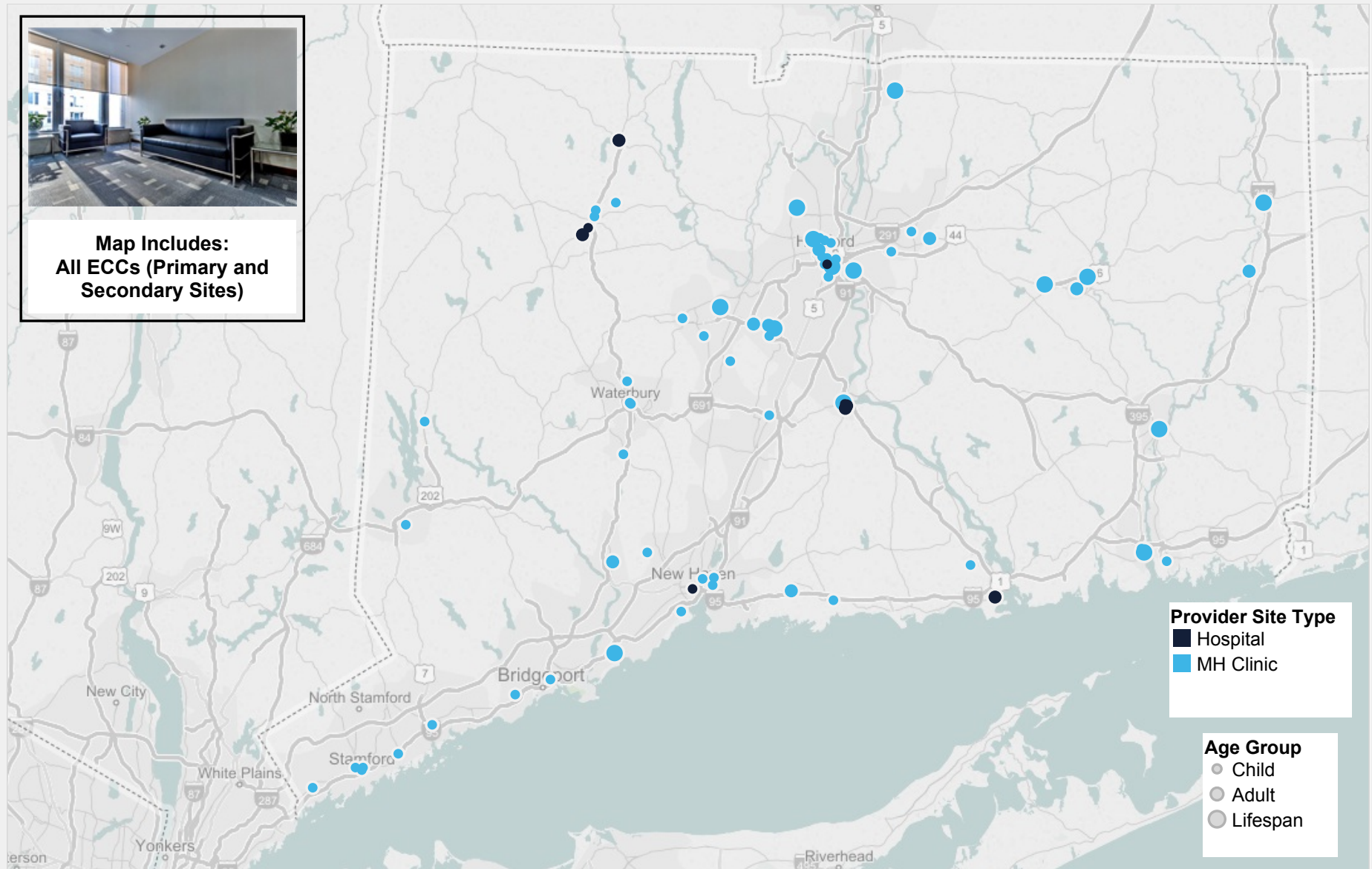
Connecticut BHP
Supporting Health and Recovery

Note: This data is based on a 2014 CT BHP Medicaid provider file report. Only providers with 3+ authorizations for outpatient services are included in this analysis. The locations are based on individual site locations in which outpatient services are authorized. Adult and youth indicators, as well as mental health and substance abuse indicators, were determined based on an annual assessment of authorization percentages.

Connecticut Outpatient Medicaid Provider Locations



Map Includes:
All ECCs (Primary and
Secondary Sites)



Provider Site Type
 ■ Hospital
 ● MH Clinic

Age Group
 ● Child
 ● Adult
 ● Lifespan

Provider Site Type
All

Provider Type
ECC



beacon
health options



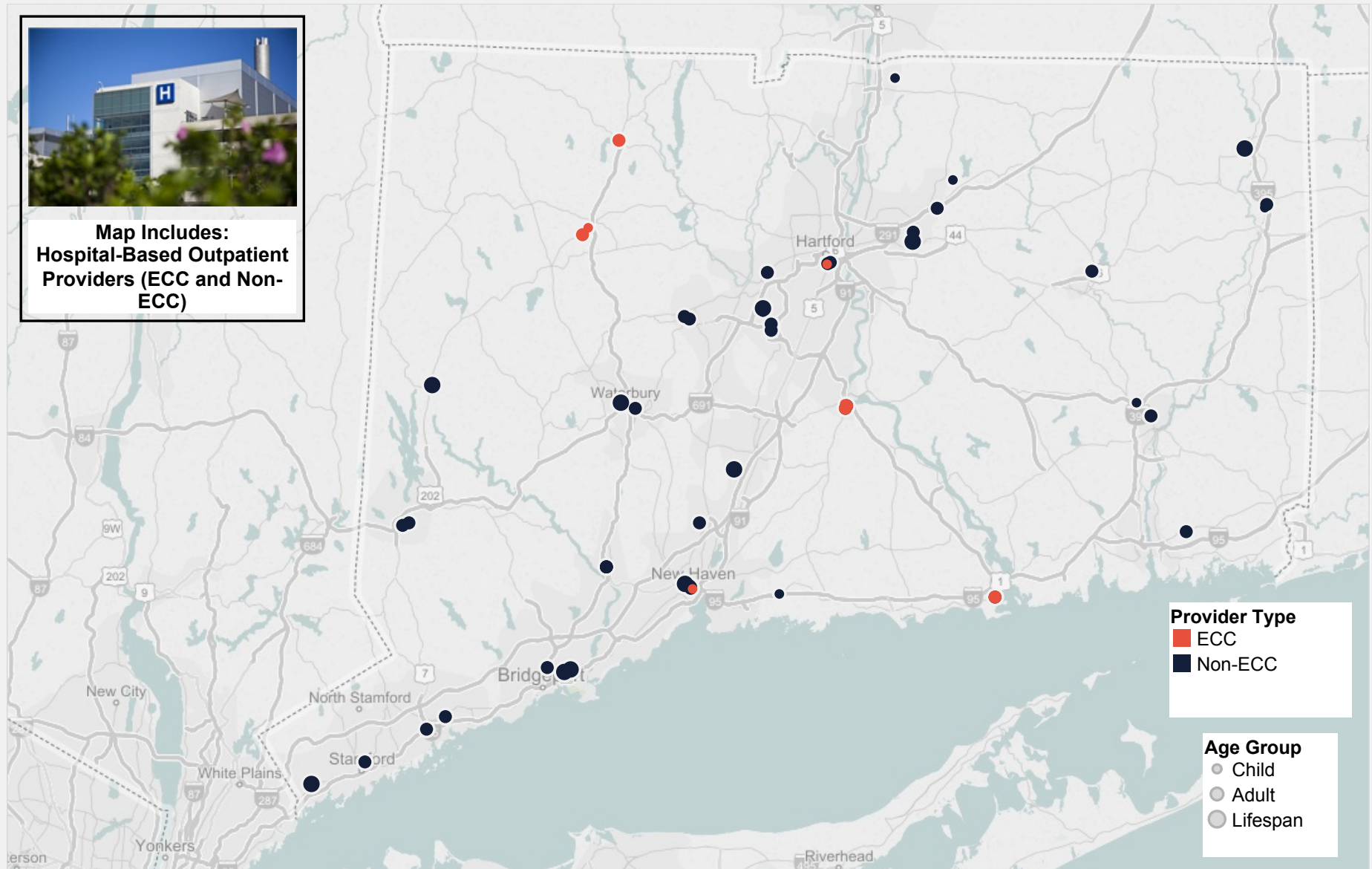
Connecticut BHP
Supporting Health and Recovery

Note: This data is based on a 2014 CT BHP Medicaid provider file report. Only providers with 3+ authorizations for outpatient services are included in this analysis. The locations are based on individual site locations in which outpatient services are authorized. Adult and youth indicators, as well as mental health and substance abuse indicators, were determined based on an annual assessment of authorization percentages.

Connecticut Outpatient Medicaid Provider Locations



**Map Includes:
Hospital-Based Outpatient
Providers (ECC and Non-
ECC)**



Provider Type
■ ECC
■ Non-ECC

Age Group
● Child
● Adult
● Lifespan

Provider Site Type
Hospital

Provider Type
All



beacon
health options



Connecticut BHP
Supporting Health and Recovery

Note: This report is based on data for the 2014 CT BHP Medicaid Geo-Access report. Only CMAP providers who provided outpatient services for 3 or more Medicaid members were included in this analysis. The locations of providers are based on the individual site locations where outpatient services were authorized. Adult and youth indicators, as well as mental health and substance abuse indicators, were determined based on an assessment of the percentage of services authorized for those populations.